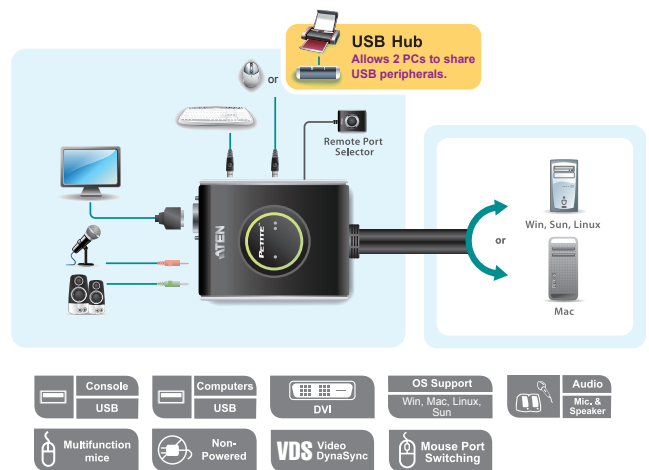


## 2-Port USB 2.0 DVI KVM Switch

The CS682 takes a giant step forward from prior models in the Petite series, by offering DVI functionality, USB 2.0 peripheral sharing, and a rich bass experience for 2.1 surround systems. Another new feature of the CS682 is the implementation of a remote port selector. This means that you can now control port switching from the desktop while the switch itself can be placed in a convenient, out of the way, location. Furthermore, the CS682 features enhanced Video DynaSync™ technology, which stores the console monitor's EDID (Extended Display Identification Data) to optimize display resolution. Also, in addition to new hotkeys, the CS682 offers the latest mouse port-switching function – simply double-click on the scroll wheel of a USB mouse to change ports. Finally, the CS682's new Power on detection feature means that if one of the computers is powered off, switch will automatically switch to the other powered-on computer.

Featuring an unbeatable combination of DVI functionality, USB 2.0 peripheral sharing convenience, and enhanced user-friendly operations, the CS682 allows users to keep up with the latest innovations in desktop multimedia applications.

### Setup



### Features

- One DVI video console controls two USB computers
  - Fully DVI-Digital specification compliant
  - USB 2.0 mouse port can be used for USB hub and USB peripheral sharing<sup>1</sup>
  - Computer selection via remote port selector, hotkeys, and USB mouse
  - Audio-enabled – full bass response provides a rich experience for 2.1 channel surround sound systems
  - Multiplatform support – Windows, Linux, Mac and Sun
  - Compact design, built-in all-in-one cables (2 x 1.2 m)
  - Independent switching of the KVM and Audio focus - one computer can have the KVM focus while the other has the audio focus
  - Superior video quality – up to 1920 x 1200
  - Compatible with widescreen LCD monitors
  - Video DynaSync™ – Exclusive ATEN technology eliminates boot-up display problems and optimizes resolution when switching between ports
  - Power on detection – if either of the computers is powered off, the CS682 will automatically switch to the other computer
  - Supports multimedia keyboards
  - Supports wireless keyboards and mice
  - Console mouse port emulation/bypass feature supports most mouse drivers and multifunction mice
  - Mac/Sun keyboard support and emulation<sup>2</sup>
  - HDCP Compliant
  - Non-Powered
  - Firmware upgradable
- <sup>1</sup> This may require an additional power adapter.  
<sup>2</sup> PC keyboard combinations emulate Mac/Sun keyboards.  
 • Mac/Sun keyboards work only with their own computers.

### Specifications

Function		CS682	
Computer Connections		2	
Port Selection		Remote port selector, Mouse, Hotkeys	
Connectors	Console Ports	Keyboard	1 x USB Type A Female (Silver)
		Video	1 x DVI-D Female (White)
		Mouse	1 x USB Type A Female (Silver)
		Speakers	1 x Mini Stereo Jack Female (Green)
		Microphone	1 x Mini Stereo Jack Female (Pink)
	KVM Ports	Keyboard	2 x USB Type A Male (Purple)
		Video	2 x DVI-D Male (Black)
		Mouse	2 x USB Type A Male (Black)
		Speakers	2 x Mini Stereo Jack Female (Green)
		Microphone	2 x Mini Stereo Jack Female (Pink)
Remote Port Selector		1 x Mini Stereo Jack	
LEDs	KVM	2 (Green)	
	Remote Port Selector	2 (Green)	
Cable Length	KVM	2 x 1.2 m	
	Remote Port Selector	1.8 m	
Emulation		Keyboard / Mouse	
Video		1920 x 1200	
Scan Interval		3, 5, 10, 20 secs. (default 5 secs.)	
Power Consumption		5V, 3.05W	
Environment	Operating Temp.	0–50°C	
	Storage Temp.	-20–60°C	
	Humidity	0–80% RH, Non-condensing	
Physical Properties	Housing	Plastic	
	Weight	0.50 kg	
	Dimensions (L x W x H)	11.10 x 7.80 x 2.50 cm	

\* Product specifications and appearance are subject to change without notice.